

Welcome to the Biomedical Engineering Education Community Virtual Conference

...we will begin shortly

1/14/2021 11:00 am Eastern Time

Introductions

Welcome all!

- Who is involved
- A brief overview of BEEC 2021
- Guideline and Expectations

Meeting Chair

- 5+ years of teaching in higher education.
- *Research interest are:*
 - BME student career outcomes (industry focus)
 - Classroom-industry integration
 - Communities of practice
- Why BEEC?
 - Desire to network
 - Know others teaching similar topics.
 - Sharing knowledge and expertise.



Alexis Ortiz-Rosario – Chair
Assistant Professor of Practice
Biomedical Engineering
Ohio State University

Committee and Co-Founders



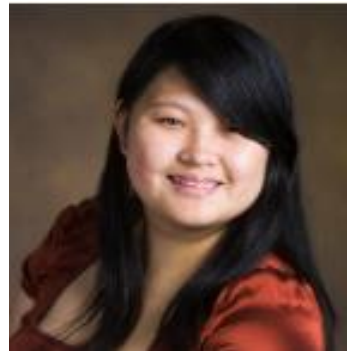
Tanya Nocera – Co-Chair
Assistant Professor – Clinical
Biomedical Engineering
Ohio State University



Jennifer Amos – Co-Chair
Teaching Associate Professor
Biomedical Engineering
University of Illinois at Urbana-
Champaign



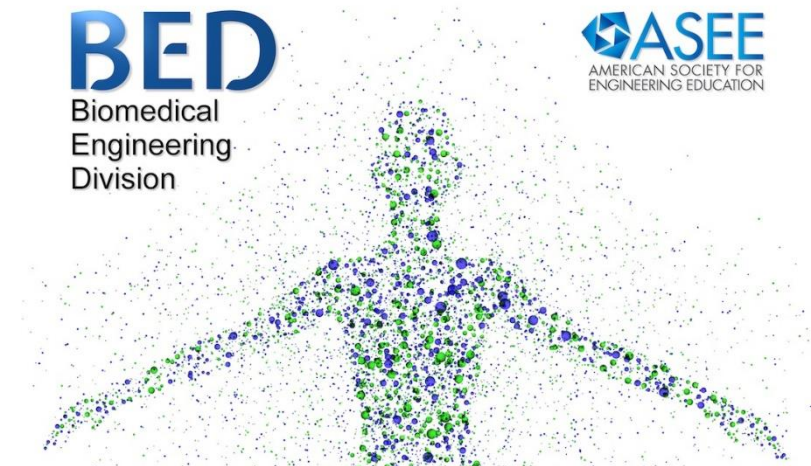
Karin Jensen – Co-Chair
Teaching Assistant Professor
Biomedical Engineering
University of Illinois at Urbana-
Champaign



Yanfen Li – Co-Chair
Assistant Teaching Professor
Biomedical Engineering
University of Massachusetts
Lowell

American Society for Engineering Education

- Biomedical Engineering Division
 - Holds workshops, paper sessions, and panel discussions.
 - Strong publication in BME-related engineering education at ASEE.
 - Division Chair: Michael J. Rust – Western New England University
 - <https://sites.asee.org/bed/>



Guidelines and Expectations

- In the main room
 - Only host and speakers mics will be on.
 - Use the chat to post questions during the talks.
 - The Q/A and panel the mic will be active for those willing (they will be asked).
- In the breakout rooms
 - Participants will be able to unmute.
 - Presenters will give their talks first, followed by discussion.
 - Please be patient and allow for the conversation to flow.
 - Please allow the moderator to guide the conversation.

Conference Block

BEEC 2021

Thursday – January 14th

11:00 – 11:05 am	Welcome remarks – Dr. Alexis Ortiz-Rosario (BEEC)
11:05 am – 12:00 pm	Keynote – Dr. Ann Saterbak, Professor of Practice, Duke University
12:00 pm – 12:45 pm	Teaching Strategies – Breakout and Presentations
12:45 pm – 1:15 pm	Break and Social Breakout – Dr. Yanfen Li (BEEC)
1:15 pm – 2:15 pm	How to Start BME Education Research – Panel Discussion
2:15 pm – 3:00 pm	Research Development – Breakout and Discussion

Schedule: <https://publish.uillinois.edu/beec/vii/tda1/beec-2021/>



Keynote

Ann Saterbak, PhD

Professor of the Practice and Director of the First-Year Engineering Program - Duke

- *Lead author of the textbook, Bioengineering Fundamentals.*
- *In Rice, she was awarded the outstanding teaching was recognized through four university-wide teaching awards.*
- *In 2013 she received the ASEE Biomedical Engineering Division Theo C. Pilkington Outstanding Educator Award.*
- *She was elected Fellow in the Biomedical Engineering Society and the American Society of Engineering Education.*
- *She is the founding editor-in-chief of the journal, Biomedical Engineering Education.*

Breakout Room – Teaching Sessions

Room 1:

Lori Herz, PhD.

Zoom Classes: Learning Over Lethargy

Nicole Ramo, PhD. *COVID-19 Drug Design: Molecular Biology Activity using RCSB PDB-101 Resources*

Room 2:

Casey Ankeny, PhD.

Creation and Deployment of Virtual, Inquiry-guided BME Laboratory Courses

Henry Lancashire, PhD.

Parallel In-Person, Recorded, and Simulated Laboratories

Room 3:

Yanfen Li, PhD.

Simulating poster presentations in an online environment

Harriet Parnell, PhD.

Material Selection for Biomedical Applications: How Can it be Taught Remotely?

Break and Social Breakout

We are going to be doing a rapid speed networking event.

Led by: Yanfen Li, PhD. (BEEC)



Research Development Panel



Breakout Room – Research Development Sessions

Wrap up and General Reflection

- Enjoyed the meeting?
- Feedback survey out next week
- More events to be planned...*stay tuned*.
- Reach out and stay in touch with your community in Slack!